

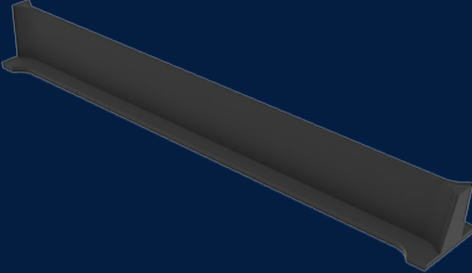
# CROSSBAR P7 PIT

Product Code: 50201871



 MATERIAL  
Ductile Cast Iron

 SIZE  
500mm (L) x 76mm (W) x 60mm (D)



## Features & benefits



## Full specifications

**Material** Ductile iron covers are manufactured from spheroidal graphite cast iron to achieve specified tensile strength and elongation requirements. Ductile iron covers can be utilised in a variety of applications to meet strength and durability requirements.