


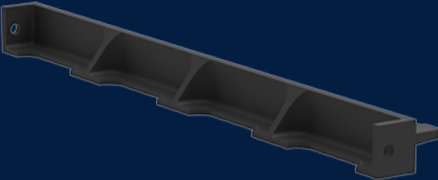
MANHOLE SIDE MEMBER 1240MM

Product Code: 50201033



 MATERIAL
Ductile Cast Iron

 SIZE
1240mm (L) x 74mm (W) x 91mm (D)



Features & benefits



Full specifications

Material Ductile iron covers are manufactured from spheroidal graphite cast iron to achieve specified tensile strength and elongation requirements. Ductile iron covers can be utilised in a variety of applications to meet strength and durability requirements.

Contact Us

Email: sales@cubis-systems.com.au

Phone: 1800 665 356