


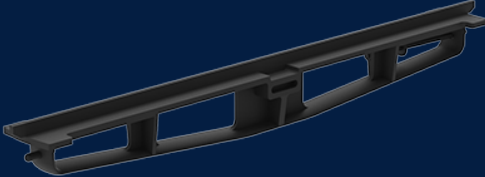
MANHOLE CROSS BAR LOCKABLE 1326MM

Product Code: 50201035



 MATERIAL
Ductile Cast Iron

 SIZE
1326mm (L) x 57mm (W) x 149mm (D)



Features & benefits



Full specifications

Material Ductile iron covers are manufactured from spheroidal graphite cast iron to achieve specified tensile strength and elongation requirements. Ductile iron covers can be utilised in a variety of applications to meet strength and durability requirements.

Contact Us

Email: sales@cubis-systems.com.au

Phone: 1800 665 356