

# ASSEMBLY MANHOLE FRAME AND COVER 6 PART

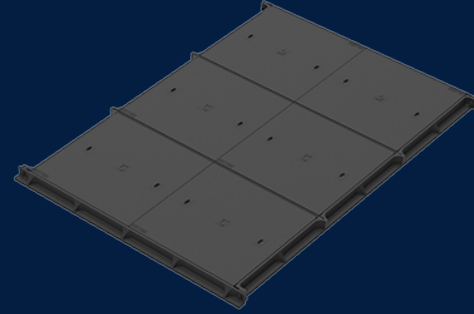
Product Code: 50201159

Our full Cast Iron Cover range delivers a durable and robust solution that can be applied in industry sectors including Communications, Energy, Transportation and Water.

 MATERIAL  
Ductile Cast Iron

 SIZE  
1326mm (L) x 57mm (W) x 149mm (D)

 LOAD RATING  
B



## Features & benefits

### Superior design that meets Australian Standards

Infrastructure Products Australia cast iron cover range is designed and built up to a Class D load rating, meeting the Australian Standard AS/NZ 3996.

### Locking and security capabilities

Our cast iron cover range has locking and security capabilities to ensure the utmost protection for your valuable assets.

### Personalised for your Client, Customer or Project

We can customise these cast iron covers to showcase a company's company or the cover's unique application.

## Full specifications

### Material

Ductile iron covers are manufactured from spheroidal graphite cast iron to achieve specified tensile strength and elongation requirements. Ductile iron covers can be utilised in a variety of applications to meet strength and durability requirements.

