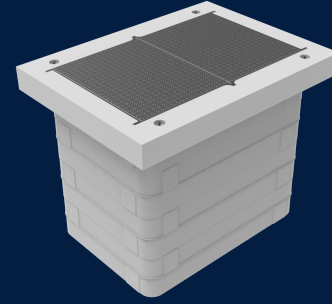


STAKKABOX™ ULTIMA 1280 MANHOLE CLASS B

Product Code: 50207385



The Ultima 1280 Manhole utilises the inherent benefits of the of the STAKKAbOX™ ULTIMA Connect system, providing amplified Class D strength capabilities without compromising on ease of installation and come with Telstra approved cast iron Class B encasement.



MATERIAL
Ductile Cast Iron, Glass-Reinforced Plastic (GRP), Precast Concrete

SIZE
1550mm (L) x 1150mm (W) x 1260mm (D)

LOAD RATING
B

Features & benefits

Fast and easy to install

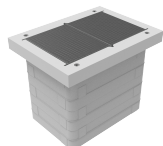
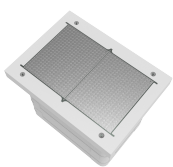
The modular assembly solution incorporates the ULTIMA Connect pit system, engineered ULTIMA beams and Telstra approved encasement for rapid installation. This system provides a significantly faster installation than conventional alternatives, providing substantial cost reductions for the installer.

Flat Pack Option

STAKKAbOX™ ULTIMA Manhole Class B can be shipped 'flat packed' to reduce shipping costs.?

Floor Base and Ring Section are available

Precast Concrete Base Slab and Ring section are available for Ultima 1280 Manhole Class B



Full specifications

Material	Glass-reinforced plastic (GRP), is a composite material, fibre-reinforced polymer made of a plastic reinforced by fine fibres made of glass. GRP has a high strength to weight ratio, high temperature range, high mechanical properties and is fire retardant. Additionally, GRP is also chemically inert and isn't susceptible to creep.
Load Rating	STAKKAbOX™ ULTIMA Hybrid is suitable for installation in environments rated to Class D load rating (ultimate limit state design of 240kN) under the Australian Standard AS/NZ 3996.
How it works	Glass-reinforced plastic (GRP), is a composite material, fibre-reinforced polymer made of a plastic reinforced by fine fibres made of glass. GRP has a high strength to weight ratio, high-temperature range, high mechanical properties and is fire retardant.

Contact Us

Email: sales@cubis-systems.com.au

Phone: 1800 665 356