

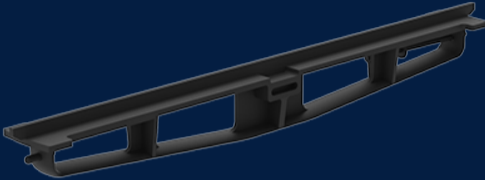
CROSSBAR MANHOLE 799MM

Product Code: 50201861



 MATERIAL
Ductile Cast Iron

 SIZE
799mm (L) x 70mm (W) x 60mm (D)



Features & benefits



Full specifications

Material Ductile iron covers are manufactured from spheroidal graphite cast iron to achieve specified tensile strength and elongation requirements. Ductile iron covers can be utilised in a variety of applications to meet strength and durability requirements.