

# BOX CULVERTS TMR 900x900-2A 1200MM NOMINAL LENGTH

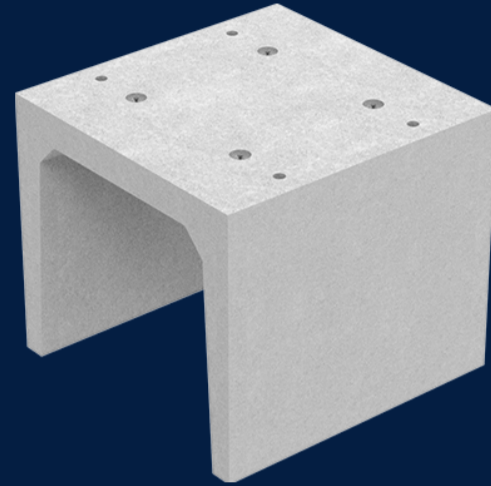
Product Code: 50207150

Base slabs are TMR approved products and they were designed to create a flat base for box culverts. They are made out of fibre reinforced concrete that has a lifespan of 100 years.

 MATERIAL  
Precast Concrete

 SIZE  
900mm (L) x 900mm (W) x 1200mm (D)

 LOAD RATING  
D



## Features & benefits

High flow drainage

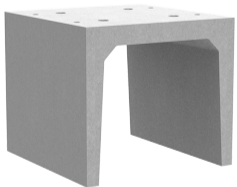
Base slabs help channel the water away quickly to prevent flooding.

“U” shape

When the box culverts are inverted, base slab becomes the roof of the culvert.

Different configurations are possible

Box culverts be used as bridge support, irrigation or walkway underpass.



## Full specifications

Material	40MPa fibre reinforced concrete is a high strength concrete used to make box culverts. The rating of 40MPa or greater means that box culverts will remain durable and robust throughout their lifetime.
Australian Standards	AS 3996: 2019
How it works	Base slabs are dropped into place followed by box culverts. If box culverts run parallel, then a link slab is placed in between to enclose the middle conduit. Minimal amount of backfill is required to complete the project.

Contact Us

Email: [sales@cubis-systems.com.au](mailto:sales@cubis-systems.com.au)

Phone: 1800 665 356