

# BOX CULVERTS TMR 1200x900-2A 1200MM NOMINAL LENGTH

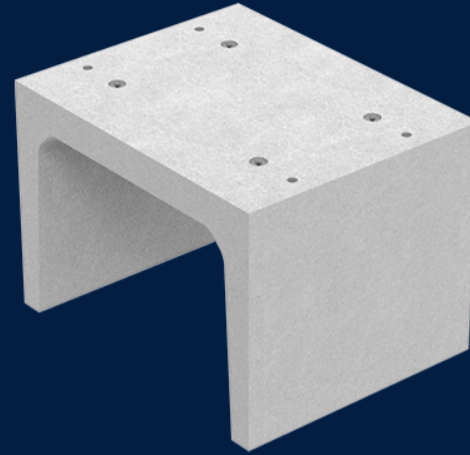
Product Code: 50207160

Base slabs are TMR approved products and they were designed to create a flat base for box culverts. They are made out of fibre reinforced concrete that has a lifespan of 100 years.

 MATERIAL  
Precast Concrete

 SIZE  
1200mm (L) x 900mm (W) x 1200mm (D)

 LOAD RATING  
D



## Features & benefits

### High flow drainage

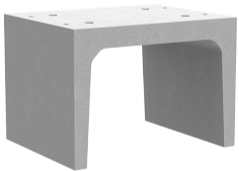
Base slabs help channel the water away quickly to prevent flooding.

### “U” shape

When the box culverts are inverted, base slab becomes the roof of the culvert.

### Different configurations are possible

Box culverts be used as bridge support, irrigation or walkway underpass.



## Full specifications

|                      |  |
|----------------------|--|
| Material             | 40MPa fibre reinforced concrete is a high strength concrete used to make box culverts. The rating of 40MPa or greater means that box culverts will remain durable and robust throughout their lifetime.                        |
| Australian Standards | AS 3996: 2019  |
| How it works         | Base slabs are dropped into place followed by box culverts. If box culverts run parallel, then a link slab is placed in between to enclose the middle conduit. Minimal amount of backfill is required to complete the project. |