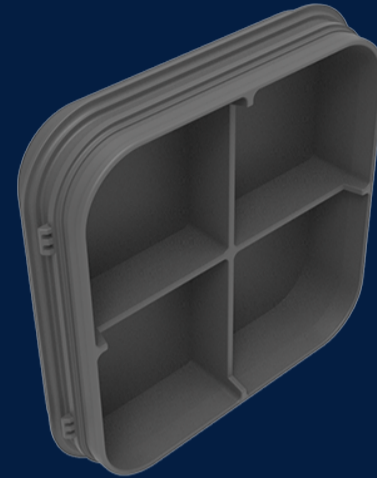


MULTIDUCT™ 4 WAY BELL END CAP XL

Product Code: 50201744

MULTIduct™ is a durable, lightweight and structural multiple duct cable protection system offering a modern alternative to traditional cable ducting systems. 4 way spigot end cap is used to terminate female duct entry point and it can be pre-fitted for simpler construction.



 MATERIAL
High Density Polyethylene (HDPE)

 SIZE
78mm (L) x 342mm (W) x 342mm (D)

 LOAD RATING
B

Features & benefits

Lightweight HDPE

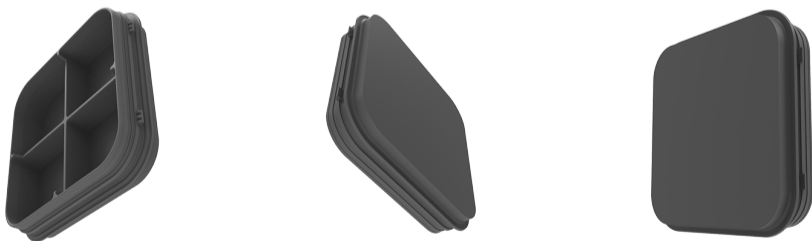
Can be transported by a ute and assembled by a single person without the need of heavy lifting machinery.

Quick assembly

Each unit can be installed in under one minute

Application

Four slots for four applications



Full specifications

Material	Manufactured from high density polyethylene (HDPE), MULTIduct™ offers a lightweight, high strength to weight unit. With parts weighing below 20kg MULTIduct™ offers significant health and safety advantages permitting a single person lift and install.
Load Rating	Infrastructure Products Australia' MULTIduct™ manufactured to a Class B load rating (ultimate limit state design load of 10kN) under the Australian Standard AS/NZ 3996
How it works	Interlocking male and female clips make installation process seem like a puzzle. Installation is as easy as lining the clips together and clicking the duct into place.