

MULTIDUCT™ 9 WAY SOCKET CAP

Product Code: 50201748

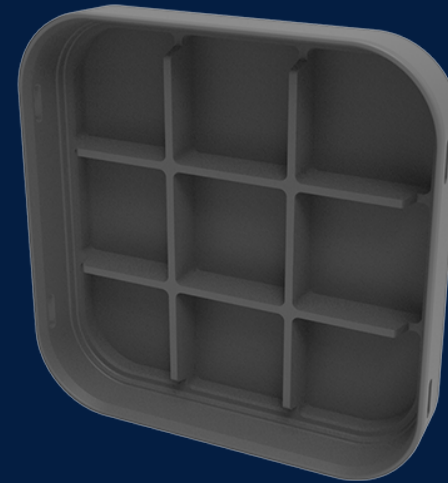


MULTIduct™ is a durable, lightweight and structural multiple duct cable protection system offering a modern alternative to traditional cable ducting systems. 9 way socket end cap is used to terminate male duct entry point and it can be pre-fitted for simpler construction.

 MATERIAL
High Density Polyethylene (HDPE)

 SIZE
73mm (L) x 111mm (W) x 111mm (D)

 LOAD RATING
B



Features & benefits

Lightweight HDPE

Can be transported by a ute and assembled by a single person without the need of heavy lifting machinery.

Quick assembly

Each unit can be installed in under one minute

Application

Nine slots for nine applications



Full specifications

Material	Manufactured from high density polyethylene (HDPE), MULTIduct™ offers a lightweight, high strength to weight unit. With parts weighing below 20kg MULTIduct™ offers significant health and safety advantages permitting a single person lift and install.
Load Rating	Infrastructure Products Australia' MULTIduct™ manufactured to a Class B load rating (ultimate limit state design load of 10kN) under the Australian Standard AS/NZ 3996.
How it works	Interlocking male and female clips make installation process seem like a puzzle. Installation is as easy as lining the clips together and clicking the duct into place.

Contact Us

Email: sales@cubis-systems.com.au

Phone: 1800 665 356