

# KERB UNIT INTAKE TMR LIL RIGHT HAND 3600MM

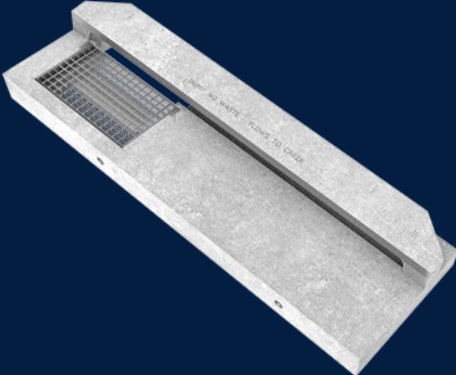
Product Code: 50207094



**MATERIAL**  
Ductile Cast Iron, Precast Concrete

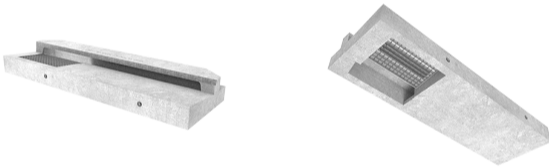
**SIZE**  
3600mm (L) x 1135mm (W) x 417mm (D)

**LOAD RATING**  
A



## Features & benefits

Full specifications



Contact Us

Email: [sales@cubis-systems.com.au](mailto:sales@cubis-systems.com.au)

Phone: 1800 665 356