



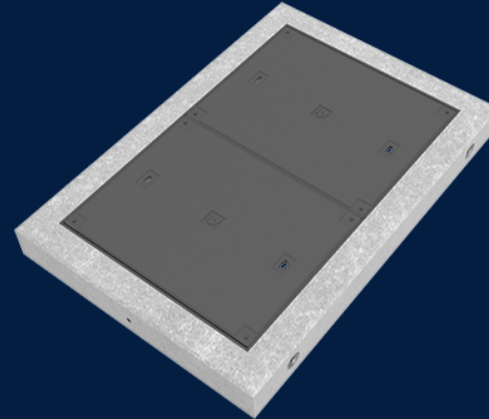
TURRET CONCRETE 150MM 1370X900X150 WITH TELSTRA 2 PART CLASS B

Product Code: 50201491

 MATERIAL
Ductile Cast Iron, Precast Concrete

 SIZE
1500mm (L) x 1030mm (W) x 150mm (D)

 LOAD RATING
B



Features & benefits

Telstra Approved

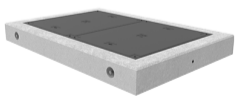
The 2 part cast iron cover set has cast in Telstra logos. The entire assembly is a Telstra approved product.

Retro fitable

Can be added to existing manholes to raise entry if ground level changes. Previous turret must be removed first.

Easily installed

Can be installed with a small excavator.



Full specifications

Material

Ductile iron covers are manufactured from spheroidal graphite cast iron to achieve specified tensile strength and elongation requirements. Ductile iron covers can be utilised in a variety of applications to meet strength and durability requirements.