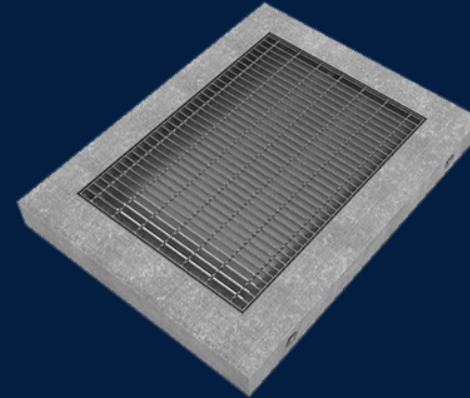


ENCASEMENT GRATE 1300X1000X250 WITH 900x600 HINGED BOLTDOWN S/STEEL HEADS CLASS D



Product Code: 50206964

Infrastructure Products Australia' precast encasements are manufactured using a 40MPa steel reinforced concrete and come in a variety of sizes to suit Infrastructure Products Australia' broad range of access covers, including GMS and cast iron covers.



MATERIAL
Ductile Cast Iron, Precast Concrete

SIZE
1300mm (L) x 1000mm (W) x 250mm (D)

LOAD RATING
D

Features & benefits

Variability in size

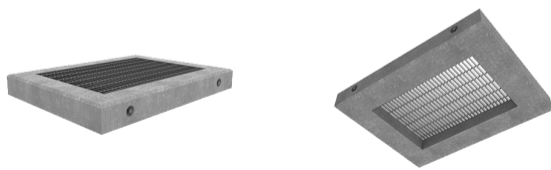
Our precast encasement range comes in a variety of sizes to accommodate for our broad range of access cover options to ensure you have the right combination for your project.

Heavy duty applications

Manufactured using steel reinforced 40MPa concrete, Infrastructure Products Australia' precast encasements are an excellent solution for heavy duty applications.

Extensive life span

Design engineered to meet industry and installation requirements, your precast encasement is guaranteed to withstand even the harshest conditions.



Full specifications

Material	High strength concrete has a compressive strength of 40MPa or greater. Infrastructure Products Australia manufactures their precast encasements using steel reinforced concrete to ensure a minimum of 40MPa. This ensures that our precast encasements remain durable and robust throughout their lifetime.
Load Rating	Infrastructure Products Australia' precast encasements are manufactured a Class D load rating (a serviceability design load of 900kN) under the Australian Standard AS/NZ 3996.

Contact Us

Email: sales@cubis-systems.com.au

Phone: 1800 665 356