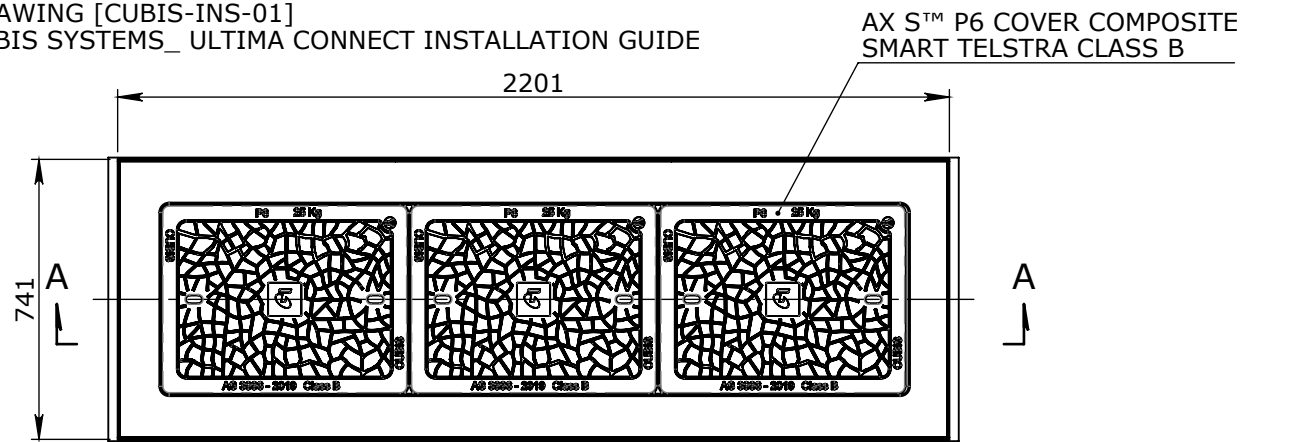
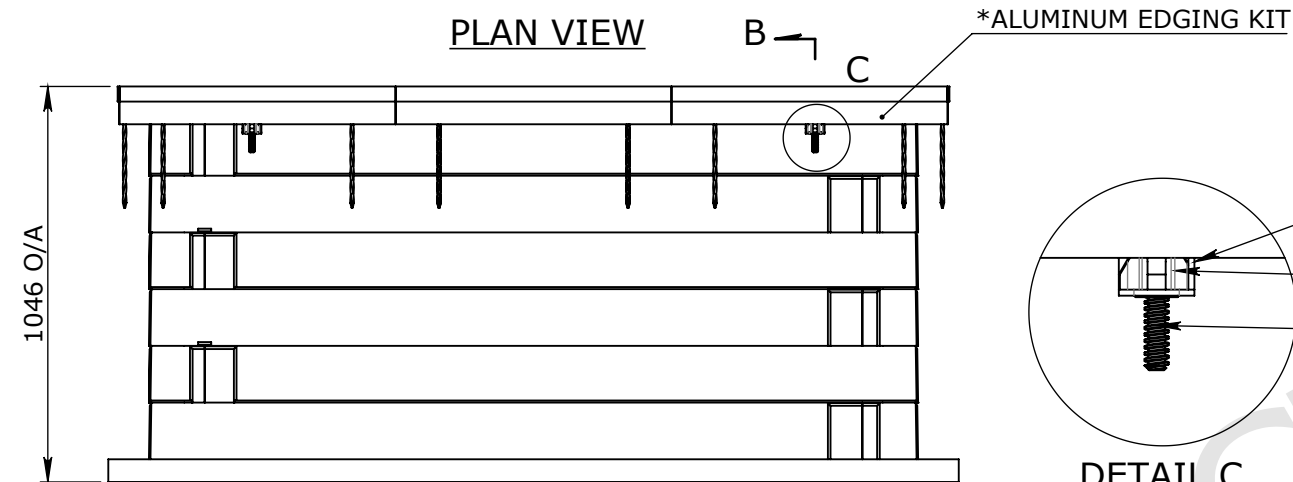


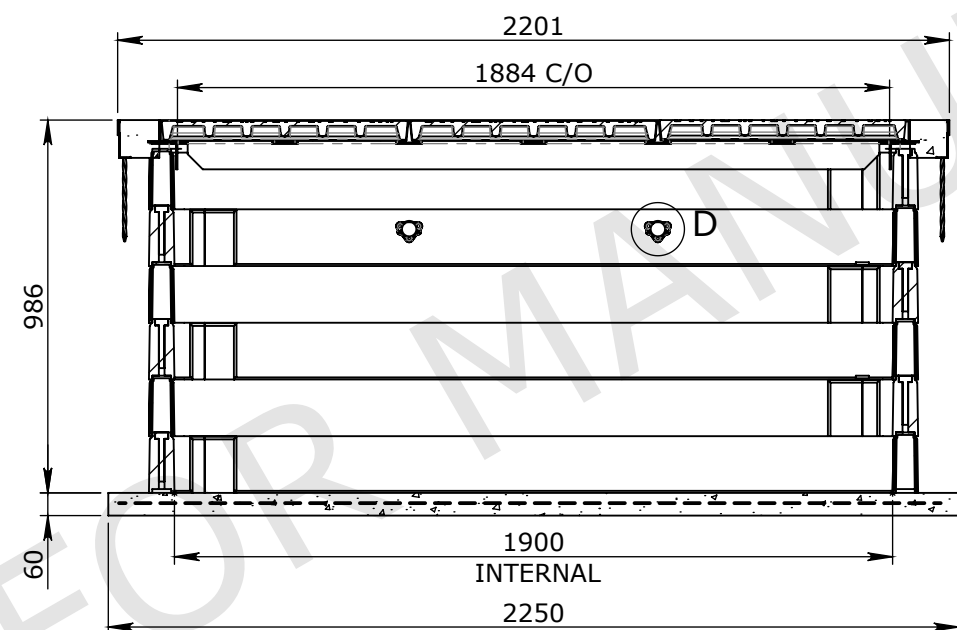
NOTE:
 REFER TO FOLLOWING DOCUMENTS FOR INSTALLATION INSTRUCTIONS FOR MANHOLE COMPONENTS AND LADDER
 1. DRAWING [CUBIS-INS-01]
 2. CUBIS SYSTEMS_ ULTIMA CONNECT INSTALLATION GUIDE



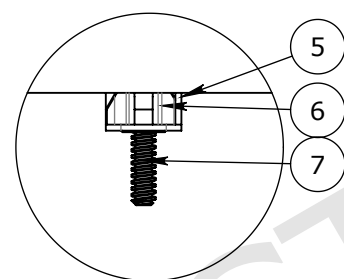
PLAN VIEW



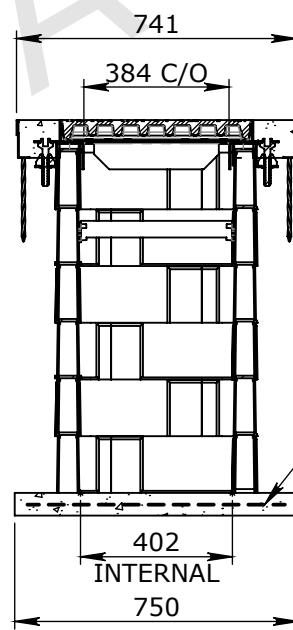
ELEVATION VIEW



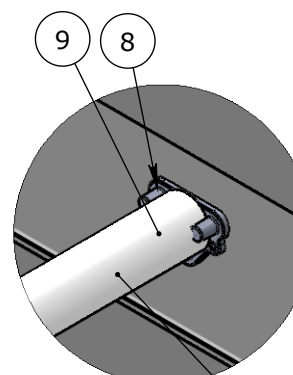
SECTION A-A



DETAIL C
SCALE_1:5

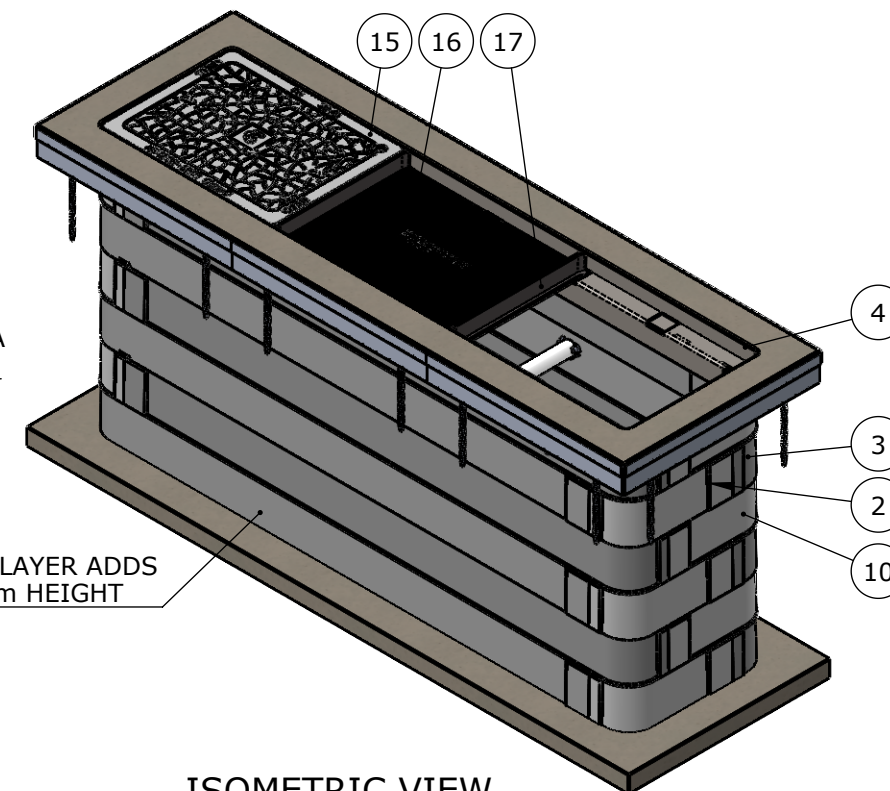


SECTION B-B



DETAIL D
SCALE_1:5
32mm DIA PVC PIPE

32MPA INSITU CAST SLAB WITH 1 LAYER OF SL82 CENTRALLY LOCATED WITH 25MM CLEAR COVER



ISOMETRIC VIEW

BOM:50202762

ITEM #	QTY.	PART #	DESCRIPTION	WEIGHT
1	24	50201133	STAKKABOX ULTIMA PEG	0.22
2	6	50201117	STAKKABOX CONNECT HS RIGHT 400mm	3.1
3	6	50201132	STAKKABOX CONNECT HS RIGHT 1900mm	9.94
4	1	50201874	HS9 STAKKABOX™ ULTIMA COVER FRAME	33
5	4	50203308	HS9 ADJUSTMENT BRACKET	0.41
6	4	50201782	HS6/8/9 ADJUSTMENT NUT	0.03
7	4	50201781	HS6/8/9 ADJUSTMENT BOLT	0.03
8	4	50201784	MOUNTING FLANGE - FORTRESS ASSEMBLY	0.01
9	2	50207879	PIPE PVC DIA32 400mm	0.2
10	6	50201116	STAKKABOX CONNECT HS LEFT 400mm	3.1
11	6	50201131	STAKKABOX CONNECT HS LEFT 1900mm	4.28
INSITU CAST PLINTH				
12	8	50201792	UTILITY PIT MIX (20KG)	20.0
13	2	50201791	UTILITY PIT MIX ADMIXTURE (11L)	11.0
INSITU CAST FLOOR				
14	12	50201788	UTILITY BASE MIX (20KG)	20.0
P6 TELSTRA COVER ASSEMBLY SET				
15	3	50201074	AX S™ P6 COVER COMPOSITE SMART TELSTRA CLASS B	16.8
16	3	50201207	GASKET P6	0.94
17	2	50201264	CROSSBAR TO SUIT P6/P8/P9 PIT	2.67

* '50207853 - ALUMINUM EDGING KIT HS9 2200X740' CAN BE SUPPLIED AS PER CLIENT REQUIREMENT

*TOTAL WEIGHT: WEIGHT OF INSTALLATION PACKAGE (FOR TRANSPORT)

- TOLERANCE NOTES:**
- CONCRETE TOLERANCES TO BE IN CONJUNCTION / ACCORDANCE WITH AS3600 - CONCRETE STRUCTURES
 - WHEN A BROOM FINISH IS REQUIRED THE GENERAL TOLERANCE SUPERCEDES THE FLATNESS TOLERANCE
 - WALL THICKNESS - DIMENSION AS NOTED IS MINIMUM THICKNESS ONLY
 - CONCRETE GRADE - 40MPA UNLESS NOTED OTHERWISE
 - DIMENSIONS ARE NOT INCLUSIVE OF SEALANTS OF JOINTS
 - SURFACE FINISH - CLASS 4 (AS3610.1)

Rev	DESCRIPTION	DATE	BY	APPROVED
1	UPDATED NOTE	290424	ML	
0	REFER TO ECO0002	120224	ML	

GENERAL TOLERANCES		REVISION CONTROL	
NOMINAL:	UP TO 1000mm	1M AND ABOVE	FLATNESS: (NOT INCLUDING BROOME FINISH)
TOLERANCE:	±5mm	1mm IN 200mm UP TO A MAXIMUM OF 20mm	±4mm PER 1M WIDTH IN 1M LENGTH

CHK / APPR: LM	WEIGHT: *APPROX. 714Kg
DATE:	MATERIAL:
RPEQ DOCUMENT #:	IRF REF:

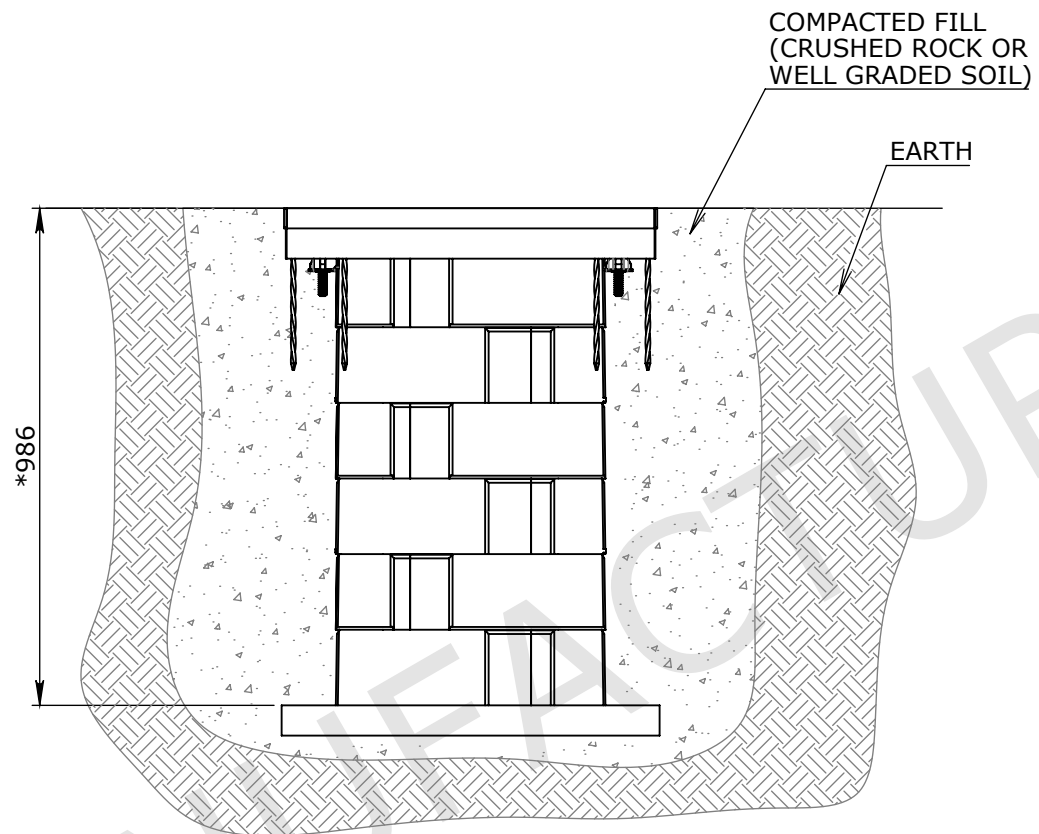
Infrastructure Products Australia
 A CRH COMPANY

HEAD OFFICE:
 1 REEVES COURT
 BREAKWATER, VIC 3219
 1800 065 356

ENGINEERING & DEVELOPMENT:
 91 STRADBROKE STREET
 HEATHWOOD, QLD 4110
 (07) 3714 0444

DRAFTED DATE: 16/06/2022	DRAWN TO AS 1100 DO NOT SCALE FROM SHEET
DRAFTED BY: P.ADAMS	
DATE LAST SAVED: 29/04/2024	
LAST SAVED BY: MLEE	

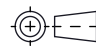
PART/PRODUCT # 50202762	QUOTE #	ORDER #
REINFORCEMENT COMPUTATION	PIT #	ITEM TYPE
CLIENT INFRASTRUCTURE PRODUCTS AUSTRALIA	DRAWING NAME STAKKAbOX™ ULTIMA Connect HS9 PIT	
PROJECT DESC CATALOGUE PRODUCTS	DRAWING # 50202762	REV. 1
PAGE 1 / 2	SHEET SIZE A3	SCALE 1:20



BACKFILL DETAIL
SCALE_1:15

* DEPTH: ADDITIONAL RINGS CAN BE ADDED WITH 150MM INCREMENTS TO ACHIEVE THE REQUIRED DEPTH

FOR MANUFACTURE QUOTE/SAMPLE

Infrastructure Products Australia <small>A CRH COMPANY</small>  <small>DRAWN TO AS 1100 DO NOT SCALE FROM SHEET</small>	<small>NAME:</small> CATALOGUE PRODUCTS		<small>REV</small> 1	
	<small>DRAWING No:</small> 50202762			
<small>DRAFTED BY:</small> P.ADAMS	<small>DRAFTED DATE:</small>	<small>PAGE:</small> 2 / 2	<small>SHEET:</small> A3	<small>SCALE UNO:</small> 1:20